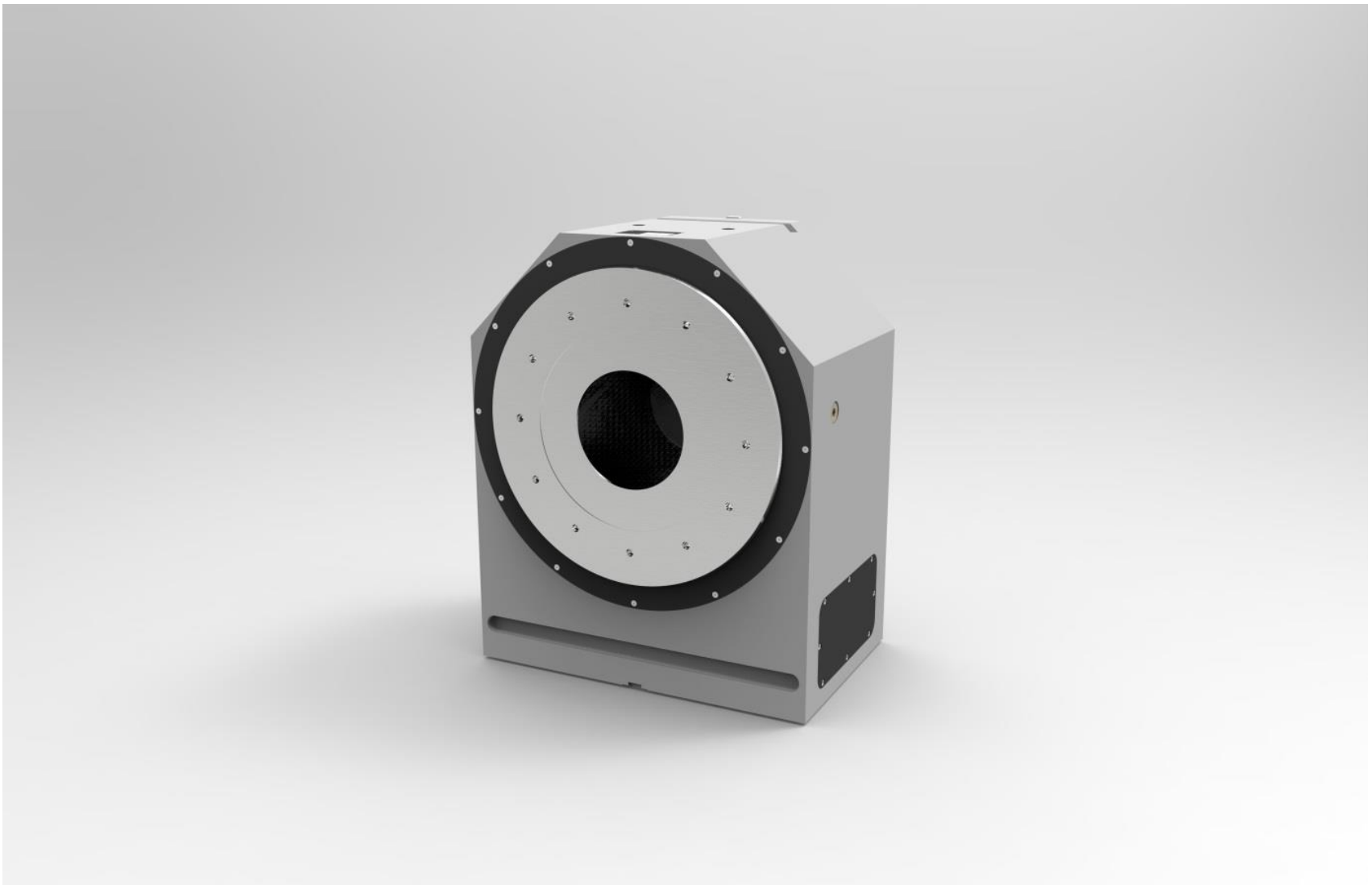


New Rotary Table with direct Drive: HD-350



With the new rotary table HD-350, Hofmann's development department gives proof of its innovation strength. The result of this work is a compact and high-performance rotary table with direct drive (torque motor). It can be used anywhere where there is a demand for high drive and fast positioning.

With the optional available water-cooled torque motor, which can be applied according to the customer's requirements from different manufacturers, driving torques of up to 680 NM are feasible. The engine is directly connected to the dividing spindle without gear speed. This offers high revolutions per minute of the dividing spindle of up to 450 rpm over a long period of time.

Due to the lack of a gear box the dividing units are almost free from wear and free of clearance. A high precision can be achieved by the use of direct measuring systems. For that, different measuring systems can be used according to the required dividing accuracy. The spindle is extremely solid: it is mounted in a heavy-duty axial-radial-angular ball bearing. Furthermore, every rotary table is equipped with a safety clamping, which reliably holds the spindle with the workpiece in its last position in case of power loss or emergency stop.